



WWW.KETROWA.IR



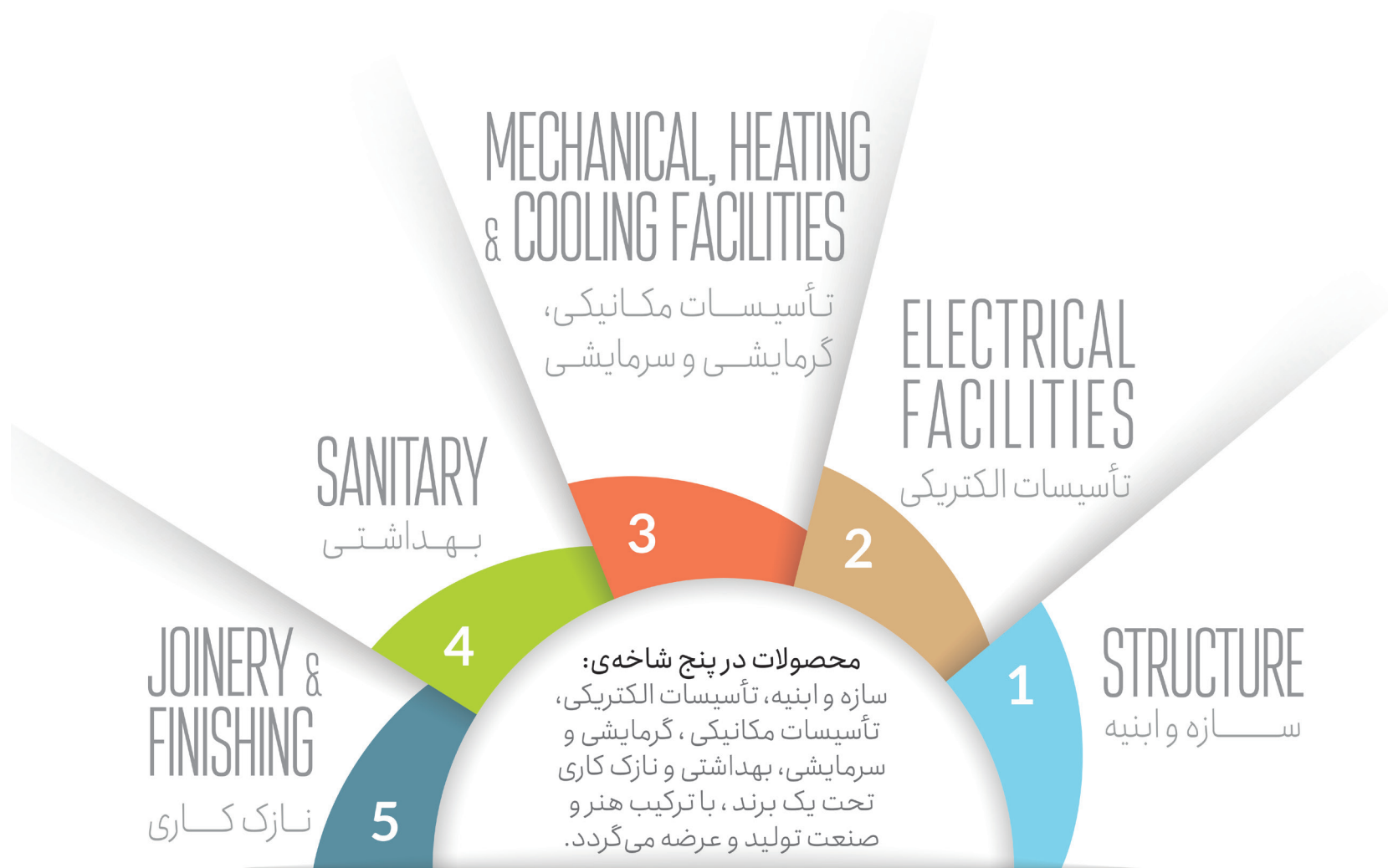
درباره کتروا

تأمین مصالح و تجهیزات پروژه‌های ساختمانی همواره یکی از مهم‌ترین دغدغه‌های سازندگان و مدیران پروژه‌هاست. اهمیت این مسئله نشأت گرفته از تأثیر مستقیم آن بر زمان بندی پروژه، هزینه تمام شده ساخت و ارزش ساختمان نهایی است.

تیم کتروا با هدف تسهیل فرایند تأمین کالاهای ساختمانی و با در نظر گرفتن مسئولیت اجتماعی خود، سامانه‌ای جامع و برخط را ایجاد نموده است. در این سامانه، سازندگان قادر خواهند بود برای پروژه‌های ساختمانی خود، زمان بندی تأمین مصالح و تجهیزات را آماده نمایند و براساس این برنامه، سفارش تأمین کالا داشته باشند. این سفارش‌ها با مقایسه کالاهای متنوع موجود در سامانه انجام می‌گیرد.

انبوه سازان، مهمترین مشتریان هدف کتروا هستند و کتروا تلاش می‌کند با برنامه ریزی منطقی برای سازندگان و با ارائه مدل خرید نقدی و اعتباری، تأمین و تحویل به موقع کالا را به مصرف کننده ارائه نماید.

تأمین کالاهای ساختمانی برای بازارهای صادراتی، یکی دیگر از اهداف اصلی کتروا است. کتروا قصد دارد بازار سنتی و غیرشفاف را به بازاری مدرن، پرسرعت و دقیق تبدیل نماید که در آن خریداران با مناسب ترین قیمت به کالاهای با کیفیت مدنظر خود دست یابند.



:Products are produced and supplied in five branches
Structure, Electrical Facilities, Mechanical, Heating & Cooling Facilities,
.Sanitary, Joinery & Finishing., combining art and industry

SMART BUILDING

ساختمان هوشمند

خانه هوشمند

SMART HOME

صفحه لمسی

TOUCH PANEL

زنگ درب ویدیویی

VIDEO DOORBELL

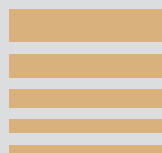
دسته هوشمند

SMART HANDLE



SMART HOME

خانه هوشمند





Fiber Optic Equipment

تجهيزات فیبر نوری

Optical Fiber Network Equipment Includes Types of Optical Fiber, Patch Cord and Optical Fiber Pigtail and Other Peripheral Equipment in Types of Loose Tube, Tight Buffer, etc., in Various Sizes and Capacities, Which Are Selected and Installed According to the Technical Needs of the Project.



RTU

Connections: Inputs: MODBUS on the Platform RS485, 4-20 Milliampere, 0 to 5 Volts, Single-bit Digital Input, 2-bit Digital Input

Outputs: LCD or SEVEN SEGMENT Display, MODBUS on the Platform RS485, 4-20 Milliampere, 0 to 5 Volts, Single-bit Digital Input, 2-bit Digital Input

Technical Specifications: Ability to Save Log, Ability to Display Information on the Web, Modularity and Ability to Change Inputs and Outputs, Has GSM-GPRS Data Transmission System.



Amplifier and Application آمپلی فایر و اپلیکیشن

Networking: Standards compliance

Supported Topologies: Star **Number of Input Channels:** 4-4-4-8-2

Remote Interface: ArmoniaPlus™

Analog: 4-4-4-8-2

Channel Handling: 4Hi-4Hi-4Hi-8mono-2

Number of Output Channels: 4Lo-4Lo-4Lo-2Hi-2Lo



Wall Speaker (Built-in)

اسپیکر دیواری توکار

Suggested Power: 10-150W

Resonant Frequency: 65Hz

Nominal Impedance: 8Ω

Frequency Range: 50-20KHz

Sensitivity: 87dB | 89dB | 90dB



Wall Speaker (Facing) 30,40,50 W

اسپیکر دیواری روکار

Maximum SPL	Max Power	Dimension(mm)	Weight(kg)	Frequency Range	Input Impedance	Input Voltage	Rated Power	Speaker Drivers	Sensitivity
102dB	60W	φ138×196	1.4	95Hz-20KHz	4Ω	70V/100V	30W	1×"1,1×"4	87dB
105dB	80W	φ169×211	2.8	85Hz-20KHz	4Ω	70V/100V	40W	1×"2,1×"5.25	89dB
107dB	100W	φ206×292	3.5	75Hz-20KHz	4Ω	70V/100V	50W	1×"2, 1×"6.5	90dB



Ceiling Speaker 35,50,60 W

اسپیکر سقفی

Max Power	Dimension(mm)	Weight(kg)	Frequency Range	Nominal Impedance	Frequency Range	Rated Power	Sensitivity	Speaker Drivers
70W	φ239*161.5	2	90Hz	8Ω	70Hz-20KHz	35W	88dB	1×"1,1×"6.5
100W	φ225	4.2	90Hz	4Ω	65Hz-20KHz	50W	106dB	1×"1,1×"6.5
120W	φ281*192.5	2.9	100Hz	8Ω	60Hz-20KHz	60W	87dB	1×"2, 1×"8



Energy Measurement

اندازه گیری انرژی

Usage: Ultrasonic Measurement of the Flow of Various Fluids, Temperature Measurement, Separation of Consumption of Residential and Industrial Units, Energy Separation of Residential and Industrial Units, The Possibility of Connecting and Disconnecting the Electric Valve Connected to It.

Measurement Accuracy: 2 Liters per Hour / 6 Liters per Hour

Accuracy of Temperature Measurement: 0.1 °C

Display: It has a Display with the Ability to Display 2 Languages

IP: 68

Connections: MODBUS RS485



Current Measurement (magnetic)

اندازه گیری جریان مغناطیسی

Technical Specifications: Absence of Obstacles in the Path of Liquid Flow, No Moving Parts, Ability to Measure Very Low Flow Rates, With the Ability to Adjust the Use of LCD with a Display

Measurement Accuracy: <1%

IP: IP68 for Sensor, For Pipes from 2 to 24 Inches (< DN50), IP67 for Display



Mini Amplifier

پلیر

Resolution: 600*1024 _ 240*320

Material: IPS

Expand TF Card Memory: 32GB

USB: Support

Output Impedance: 4-8Ω

Output Power: 2×10-25-30-60W(Digital Amplifier) - 8×25W(Digital Amplifier)

Frequency Response: 20Hz-20KHz

Photo: JPG/E/BMP/GIF/PNG etc

Audio S/N ratio: 98db

Speaker: Constant resistance speaker

Bluetooth: Version 4.0

RAM: 2GB

ROM: 16GB

Audio Input: AUX/one set

Feature: Support Google Play/You Tube App | WIFI/ USB/TF/ Fm Radio/ Bluetooth

Audio Format: MP3/WAV/WIMA/FLAC/APE/DTS/ACC/AC3

Video Format: MPEG-1/2/3/4/RM/RMVB/WMV/MOV | MIK/VOB/AVI/3GP/H/264 etc

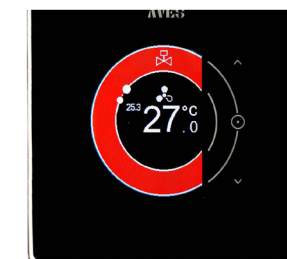
Audio Input: AUX/one set



Thermostat (AVES)

ترموستات (AVES)

Technical Specifications: Equipped with a Touch Screen, Zigbee Protocol Support, Ability to Control Three Turns of the Fan Coil, The Ability to Run Different Scenarios, Ability to Control Through the Application, Ability to Control Hot and Cold Valve (2Pipe, 4Pipe), Functionality in Three Modes (Eco, Away, Turbo, Sleep), The ability to Save the Last State After Turning Off the Device, Ability to Operate Independently (In Case of Zigbee Network Disconnection), Display the Actual and Required Temperature, Fan Speed, System Status on the Screen.



Sivacon Fixed Standing Boards

تابلوهای ایستاده ثابت سیواکن

Usage: It Has a Galvanized Body, Has an Economical Price and a Very Short Delivery Time, the Possibility of Making Single and Double Doors, the Possibility of Connecting the Cells to Each Other, Low Weight, Very Easy and Fast Maintenance.

Installation Method: Built-in, Facing, Standing, Bridge Mounted

Body Material: Galvanized, Stainless Steel, Painted Steel (Electrostatic) and Polymer

Sheet Thickness (mm): From 0.5 to 4 mm

IP: 42-65



Rittal Standing Boards

تابلوهای ایستاده ریتال

Usage: The Possibility of Increasing or Decreasing Cells in the Development Plan, Very High Physical Strength

Installation Method: Built-in, Facing, Standing, Bridge Mounted

Body Material: Galvanized, Stainless Steel, Painted Steel (Electrostatic) and Polymer

Sheet Thickness (mm): From 0.5 to 4 mm

IP: 42-65



Wall Panels

تابلوهای دیواری

Usage: The Possibility of Optimal Use of Minimal Spaces in Residential Units, Industrial, Residential, Commercial and Office Systems, Built-in and Facing

Installation Method: Built-in, Facing, Standing, Bridge Mounted

Body Material: Galvanized, Stainless Steel, Painted Steel (Electrostatic) and Polymer

Sheet Thickness (mm): From 0.5 to 4 mm

IP: 42-65

Colour: Dark Gray / Light Gray



Outdoor Boards

تابلوهای فضای باز

Usage: Special Waterproof Fittings, Degree of Protection 54 and 65, For Use in Open Spaces, Humid Environments, Polluted and Exposed to Dust.

Installation Method: Built-in, Facing, Standing, Bridge Mounted

Body Material: Galvanized, Stainless Steel, Painted Steel (Electrostatic) and Polymer

Sheet Thickness (mm): From 0.5 to 4 mm

IP: 42-65

Colour: Dark Gray / Light Gray



Rack

رک

Wall Rack: It Has Heights of 4, 6, 7 and 9 Units

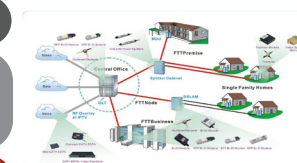
Standing Upright: It Has 1 fan, 4 Wheels, 4 Fixed Bases and a Set of Bolts and Nuts - Has an Entrance For All Kinds of Cables - the Height of the Racks is 16, 21, 28, 36, 40 or 44 Units - the Depths Are 60, 80 and 100 cm and Above - With Glass Doors or Frame - the Possibility of Installing 1 to 4 Fans Inside the Racks



Fiber to the Home (FTTH)

فیبر منازل

Technical Specifications: In the Home Fiber Structure, Optical Fiber Is Stretched From the Local Telephone Exchange (OLT) to the Shared Equipment (ONT). Very High Bandwidth. Long Service Life. Due to the Use of Optical Fiber and Passive Elements in the Network, Energy Consumption Has Been Minimized and the Network Is a So-called Green Network.



Cable and Network Copper Equipment

کابل و تجهیزات مسی شبکه

Technical Specifications: Copper Network Equipment Includes All Types of Network Cables, Patch Cords, Patch Panels and Other Peripheral Equipment in FTP, SFTP, STP, UTP and Various Sizes and Capacities, Which Are Selected and Installed According to the Technical Needs of the Project.



Model: Amplifier

Output Power: 4 - 180 Watts

Power Supply: 220V

Weight: 9 kg

Dimensions: 330*110*420

Model: Halogen Ceiling Speaker (3 Inch) (6 W)

Frame Size: 10 cm

Round Cutter Size: 9 cm

Thickness: 7.4 cm

Water Vapor Resistant (Suitable for Bathrooms)

Model: 7-inch Sound Panel

Android Operating System

USB & SD Card

Wi-Fi & Bluetooth

Control for Two Separate Audio Zones

100-Watt Output

Ability to install smart home applications

Model: Ceiling Speaker (6.5 Inch) (50-100W)

Frame Size: 23 cm

Round Cutter Size: 20.5 cm

Thickness: 12 cm

Crossover Range

Frameless

Model: Ceiling Speaker (5 Inch) (20-50W)

Frame Size: 18.5 cm

Round Cutter Size: 16.5 cm

Thickness: 7 cm

Water Vapor Resistant (Suitable for Swimming Pools)

Model: Ceiling Speaker (5 Inch) (20-50W)

Frame Size: 18.5 cm

Round Cutter Size: 16.5 cm

Thickness: 7 cm

Crossover Range

Bluetooth

Model: 3.5-inch sound panel

Bluetooth

4 speaker Outputs of 25 Watts

USB & SD Card

Remote Control

Model: Ceiling Speaker (5 Inch) (20-50W)

Frame Size: 18.5 cm

Round Cutter Size: 16.5 cm

Thickness: 7 cm

Crossover Range

Model: Ceiling Speaker (25 W)

Frame Size: 18.5 cm

Round Cutter Size: 16 cm

Thickness: 7.4 cm

Frameless

Frameless

Model: Ceiling Speaker (8 Inch) (70-100W)

Frame Size: 28.5 cm

Round Cutter Size: 23 cm

Thickness: 16 cm

2-inch Tweeter

Crossover Range

Model: Bluetooth Rock Speaker (5 Inch) (20-50W)

Gray - Brown

Rain Resistant

Bluetooth Port (Suitable for the Garden)

Model: Simple Rock Speaker (5 Inch) (20-50W)

Gray - Brown

Rain Resistant

Crossover Range (Suitable for the Garden)

Model: Ceiling Speaker (6 - 10 W)

Frame Size: 18.8 cm

Round Cutter Size: 16.3 cm

Thickness: 6.2 cm

Model: Ceiling Speaker (50W)

Frame Size: 22.6 cm

Round Cutter Size: 20 cm

Thickness: 8.5 cm

Model: Amplifier Board (with Power Supply)

2 Speaker Outputs

AUX Port

Volume Adjustment Keys

Model: Amplifier

Output Power: 2 - 100 Watts

Power Supply: 220V

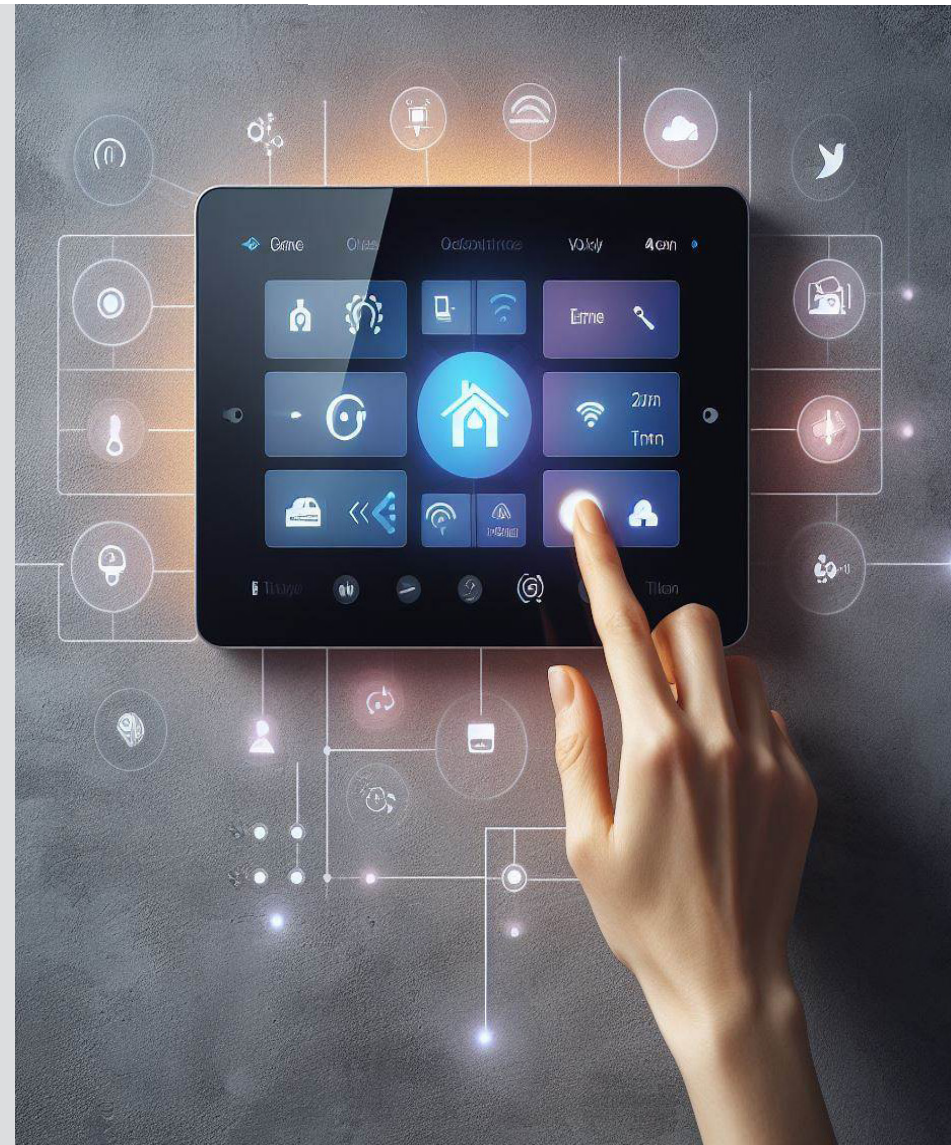
With mic-2, Echo & Vibration Input

Bluetooth & USB

TOUCH PANEL

صفحه لمسی





**Model: N86H-4**

4-inch Display

Output Power: 4 x 10 to 20 Watts

Bluetooth

Dimensions: 86*86*11 mm

**Model: T10**

Android 11 Operating System

10-inch Display

Output Power: 8 x 20 Watts

Bluetooth & Wi-Fi

Dimensions: 11.25*162*245.2 mm

**Model: N86N-4**

Android 11 Operating System

4-inch Display

Output Power: 2 x 10 to 20 Watts

Bluetooth & Wi-Fi

Dimensions: 11*86*86 mm

**Model: F8-TUYA**

Android 8.1 Operating System

8-inch Display

Output Power: 2 x 20 Watts

Bluetooth

Dimensions: 11.5*133*250 mm

Model: N86M-4

Android 8.1 Operating System

4-inch Display

Output Power: 4 x 25 Watts

Bluetooth & Wi-Fi

Dimensions: 86*86*11 mm

Model: A7-PRO

Android 8.1 Operating System

7-inch Display

Output Power: 8 x 20 Watts

Bluetooth & Wi-Fi

Dimensions: 10.5*125*185 mm

**Model: F7-TUYA**

Android 8.1 Operating System

7-inch Display

Output Power: 2 x 10 Watts

Bluetooth

Dimensions: 11.5*114.6*235 mm

**Model: F10-TUYA**

Android 11 Operating System

10-inch Display

Output Power: 2 x 20 Watts

Bluetooth

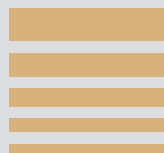
Dimensions: 11.5*162*297 mm





VIDEO DOORBELL

زنگ درب ویدیویی





Monitor Model: CU – S 43

Specifications

- With touch keyboard
- No disruption to the functioning of the keys when touched with wet hands
- Can be used in both modes with and without a phone (Handsfree)
- Connecting the handset to the monitor body via magnet and with magnetic disconnecter
- The possibility of installation in both four-wire or five-wire methods
- Smart with the ability to connect to two doors and two cameras
- Ability to control outputs (enable or disable the door)
- Possibility of internal communication between units Videophone
- Possibility of taking photos and videos along with recording the client's voice
- Ability to take photos and videos in motion detection mode
- Additional lock or Video Doorbell calling capability
- Possibility to open the electric jack
- SD Micro memory connection
- 7 different melodies and can be adjusted for each doorbell



Monitor Model: CU – S 72

Specifications

- With touch keyboard
- No disruption to the functioning of the keys when touched with wet hands
- Can be used in both modes with and without a phone (Handsfree)
- Connecting the handset to the monitor body via magnet and with magnetic disconnecter
- The possibility of installation in both four-wire or five-wire methods
- Smart with the ability to connect to two doors and two cameras
- Ability to control outputs (enable or disable the door)
- Possibility of internal communication between units Videophone
- Possibility of taking photos and videos along with recording the client's voice
- Ability to take photos and videos in motion detection mode
- Additional lock or Video Doorbell calling capability
- Possibility to open the electric jack
- SD Micro memory connection
- 7 different melodies and can be adjusted for each doorbell

Monitor Model: CU – K 77

Specifications

With high-sensitivity 7 Touch Screen TFT
Ability to connect to Video Doorbell TV
Possibility to play the welcome song
Lighting control with Video Doorbell when you are not at home
Ability to connect up to 6 cameras (2 panels and 4 CCTV cameras)
Possibility of internal communication between units (INTERCOM)
Ability to choose a personal ringtone for the panel
Possibility of taking photos and videos with the client's voice
Possibility of automatic video recording at a specified time (DVR)
Possibility to connect to micro-SD memory
Ability to play music and display family album (Photo Frame)
Ability to leave voice messages for family members
Separate melody for each doorbell
16 melodies for panel ringing
Time and calendar display
Possibility to open the electric jack, additional lock or elevator call capability
Electronic answering machine with the ability to play your own voice as an answering machine



Monitor Model: NAFIS VIDEO DOORBELL

Specifications

Full color, fog-free night vision
Equipped with an alarm
Completely eliminate the whistling sound of the Video Doorbell panel
Maximum camera angle adjustment in four directions
Possibility to open the door and electric jack with a mobile phone in the new Bluetooth model
Rainproof (meets IP65 standard)

Monitor Model: TAGGED with NAFIS VIDEO DOORBELL**Specifications**

- Full color, fog-free night vision
- Equipped with an alarm
- Completely eliminate the whistling sound of the Video Doorbell panel
- Maximum camera angle adjustment in four directions
- Possibility to open the door and electric jack with a mobile phone in the new Bluetooth model
- Rainproof (meets IP65 standard)

**Monitor Model: NEGAR CODING PANEL****Specifications**

- Touch keyboard and OLED display
- Ability to use up to 120 units on the video doorbell
- Ability to use conventional 4-wire and 5-wire analog monitors
- Very easy to install and set up
- Video doorbell with direct connection to security
- Possibility to open the door by password and also using a tag or card
- No need for coding and the ability to change the unit number if needed

Monitor Model: NEGAR VIDEO DOORBELL**Specifications**

- With excellent night vision depth using LED light accelerator
- Ability to adjust the camera's viewing angle in four directions
- No disruption in the functioning of the keys due to touching with wet hands
- Moisture and dust resistant
- Possibility of installation in both four-wire and five-wire methods
- Enhanced sound quality
- Opening the door by card or tag without additional wiring in the door (card reader model)



Monitor Model: FINGERPRINT CODING PANEL

Specifications

OLED screen
Touch keyboard with excellent performance without disruption even in rainy weather
Excellent night vision depth using LED light accelerator
Possibility to open the door by fingerprint, password, or using a tag or card
Ability to add 300 fingerprints and delete fingerprints individually and completely
No need for coding and if desired, the ability to assign a desired number to the units
Ability to use conventional 4-wire and 5-wire analog monitors
Moisture and dust resistant
Very easy to install and set up
Usable up to 120 units
Direct contact with security



Monitor Model: NEGIN CODING PANEL

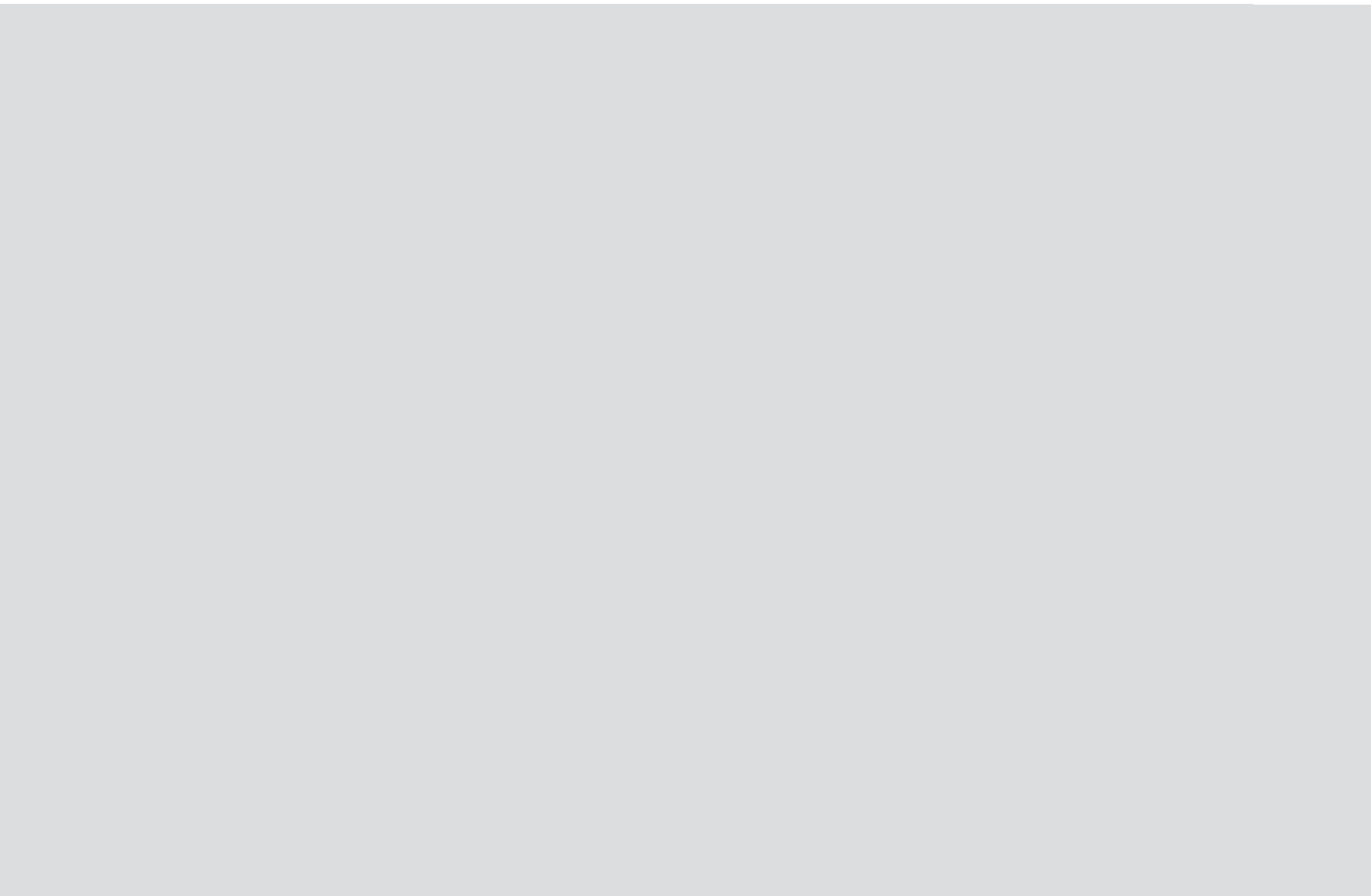
Specifications

Touch keyboard and LED color display
Usable up to 200 units
Ability to use conventional 4-wire analog monitors
Very easy installation and setup of video doorbell
Display date and time
Direct communication key with security
Possibility of opening the door by password or using a tag or card
Adding and removing tags and cards for each unit separately and the ability to delete all tags

SMART HANDLE

دسته هوشمند





Eyetech Smart Lock

Face Recognition ≤50 users

PIN Code ≤200 users

Cards ≤200 users

Finger Prints ≤50 users

App Support: U-smart or Tuya

Door Thickness: 40 to 120 mm

Working Temperature: 70 to -40 degrees Celsius

Working Humidity: 0 to 90% RH

Dimensions: 70 (width) - 421 (height) - 64.3 (thickness)

Mechanical Emergency Keys: 5 Number

Safety Alarms: Warning of attempted unauthorized entry and insufficient charge

Power Supply: Type C 7.4V Lithium Battery

Charge Retention Period: Up to 3 Months

Body Material: Aluminum Alloy

Remote Control: Upon Customer Request

Colour: Dark Gray - Mocha Brown

Compatible Current: 3 to 500 mA

Guarantee: 5 years guarantee and 10 years after sales service and support





Ketrowa Smart Building

Amplifier & Application	
Networking	Standards compliance
Supported Topologies	Star
Number of Input Channels	4-4-4-8-2
Remote Interface	ArmoniaPlusTM
Analog	4-4-4-8-2
Channel Handling	4Hi-4Hi-4Hi-8mono-2
Number of Output Channels	4Lo-4Lo-4Lo-2Hi-2Lo

RTU	
Connections	Inputs: MODBUS on the Platform RS485, 4-20 Milliampere, 0 to 5 Volts, Single-bit Digital Input, 2-bit Digital Input
	Outputs: LCD or SEVEN SEGMENT Display, MODBUS on the Platform RS485, 4-20 Milliampere, 0 to 5 Volts, Single-bit Digital Input, 2-bit Digital Input
Ability to Save Log, Ability to Display Information on the Web, Modularity and Ability to Change Inputs and Outputs, Has GSM-GPRS Data Transmission System.	

Wall Speaker (Built-in)	
Suggested Power	10-150W
Resonant Frequency	65Hz
Nominal Impedance	8Ω
Frequency Range	50-20KHz
Sensitivity	87dB 89dB 90dB

Wall Speaker (Facing) 30,40,50 W

Maximum SPL	Max Power	Dimension(mm)	Weight(kg)	Frequency Range	Input Impedance	Input Voltage	Rated Power	Speaker Drivers	Sensitivity
102dB	60W	φ138×196	1.4	95Hz-20KHz	4Ω	70V/100V	30W	1×"1,1×"4	87dB
105dB	80W	φ169×211	2.8	85Hz-20KHz	4Ω	70V/100V	40W	1×"2,1×"5.25	89dB
107dB	100W	φ206×292	3.5	75Hz-20KHz	4Ω	70V/100V	50W	1×"2 , 1×"6.5	90dB

Ceiling Speaker 35,50,60 W

Max Power	Dimension(mm)	Weight(kg)	Frequency Range	Nominal Impedance	Rated Power	Speaker Drivers	Sensitivity
70W	φ239*161.5	2	70Hz-20KHz	8Ω	35W	1×"1,1×"6.5	88dB
100W	φ225	4.2	65Hz-20KHz	4Ω	50W	1×"1,1×"6.5	106dB
120W	φ281*192.5	2.9	60Hz-20KHz	8Ω	60W	1×"2 , 1×"8	87dB

Energy Measurement

Measurement Accuracy	2 Liters per Hour / 6 Liters per Hour	IP	68
Accuracy of Temperature Measurement	0.1 °C	Connections	MODBUS RS485

Display: It has a Display with the Ability to Display 2 Languages

Current Measurement (magnetic)

Measurement Accuracy	<1%	IP	IP68 for Sensor, For Pipes from 2 to 24 Inches (< DN50), IP67 for Display
-----------------------------	-----	-----------	---

Absence of Obstacles in the Path of Liquid Flow, No Moving Parts, Ability to Measure Very Low Flow Rates, With the Ability to Adjust the Use of LCD with a Display

Mini Amplifier					
Resolution	Material	Expand TF Card Memory	USB	Output Impedence	Output Power
600*1024 _ 240*320	IPS	32GB	Support	4-8Ω	2×10-25-30-60W(Digital Amplifier) - 8×25W(Digital Amplifier)
Frequency Response	Photo	Audio S/N ratio	Speaker	Bluetooth	RAM
20Hz-20KHz	JPG/E/BMP/GIF /PNG etc	98db	Constant resistance speaker	Version 4.0	2GB
ROM	Audio Input	Feature: Support Google Play/You Tube App WIFI/ USB/TF/ Fm Radio/ Bluetooth			
16GB	AUX/one set	Video Format: MPEG-1/2/3/4/RM/RMVB/WMV/MOV MIK/VOB/AVI/3GP/H/264 etc			

Thermostat (AVES)
Equipped with a Touch Screen, Zigbee Protocol Support, Ability to Control Three Turns of the Fan Coil, The Ability to Run Different Scenarios, Ability to Control Through the Application, Ability to Control Hot and Cold Valve (2Pipe, 4Pipe), Functionality in Three Modes (Eco, Away, Turbo, Sleep), The ability to Save the Last State After Turning Off the Device, Ability to Operate Independently (In Case of Zigbee Network Disconnection), Display the Actual and Required Temperature, Fan Speed, System Status on the Screen.

Sivacon Fixed Standing Boards	
Installation Method	Built-in, Facing, Standing, Bridge Mounted
Body Material	Galvanized, Stainless Steel, Painted Steel (Electrostatic) and Polymer
Sheet Thickness (mm)	From 0.5 to 4 mm
IP	42-65

Rack

Wall Rack	It Has Heights of 4, 6, 7 and 9 Units
Standing Upright	It Has 1 fan, 4 Wheels, 4 Fixed Bases and a Set of Bolts and Nuts - Has an Entrance For All Kinds of Cables - the Height of the Racks is 16, 21, 28, 36, 40 or 44 Units - the Depths Are 60, 80 and 100 cm and Above - With Glass Doors or Frame - the Possibility of Installing 1 to 4 Fans Inside the Racks

Fiber to the Home (FTTH)

In the Home Fiber Structure, Optical Fiber Is Stretched From the Local Telephone Exchange (OLT) to the Shared Equipment (ONT). Very High Bandwidth. Long Service Life. Due to the Use of Optical Fiber and Passive Elements in the Network, Energy Consumption Has Been Minimized and the Network Is a So-called Green Network.



CERTIFICATE

THE MANAGEMENT SYSTEM OF
TOSEE VA TAMIN BANA GOSTAR ASIA SAZEH CO. (KETROWA)

NO.477, BETWEEN 1ST AND 2ND VAHD ST., SHAHID BEHESHTI BLVD., BAGHESTAN HWY., SHAHRAR, TEHRAN PROVINCE, IRAN

has been assessed and certified as meeting the requirements of

ISO 14001:2015

Environmental management system

FOR THE FOLLOWING ACTIVITIES

Comprehensive Supplier of Building Materials

CERTIFICATE REGISTRATION NO.: QM5933306
ORIGINAL CERTIFICATION DATE: MAY 07, 2025
CURRENT CERTIFICATION DATE: MAY 07, 2025
CERTIFICATE EXPIRY DATE: MAY 07, 2028
THIS CERTIFICATE REMAINS VALID SUBJECT TO SATISFACTORY SURVEILLANCE AUDITS.


Authorized Signatory
EIQM Ltd. Certification Services
info@eiqmcert.com



EIQM Ltd. Certification Services is a certification body for assessment of objective evidence and issuance of certificate. this certificate is issued on the basis of the independent authority of the EIQM certification services. we partner with you to offer independent services that will help you, streamline your processes and operate in a more sustainable manner.
The validity of this certificate can be verified at www.eiqmcert.com



CERTIFICATE

THE MANAGEMENT SYSTEM OF
TOSEE VA TAMIN BANA GOSTAR ASIA SAZEH CO. (KETROWA)

NO.477, BETWEEN 1ST AND 2ND VAHD ST., SHAHID BEHESHTI BLVD., BAGHESTAN HWY., SHAHRAR, TEHRAN PROVINCE, IRAN

has been assessed and certified as meeting the requirements of

ISO 45001:2018

Occupational health and safety management system

FOR THE FOLLOWING ACTIVITIES

Comprehensive Supplier of Building Materials

CERTIFICATE REGISTRATION NO.: QM5933307
ORIGINAL CERTIFICATION DATE: MAY 07, 2025
CURRENT CERTIFICATION DATE: MAY 07, 2025
CERTIFICATE EXPIRY DATE: MAY 07, 2028
THIS CERTIFICATE REMAINS VALID SUBJECT TO SATISFACTORY SURVEILLANCE AUDITS.


Authorized Signatory
EIQM Ltd. Certification Services
info@eiqmcert.com



EIQM Ltd. Certification Services is a certification body for assessment of objective evidence and issuance of certificate. this certificate is issued on the basis of the independent authority of the EIQM certification services. we partner with you to offer independent services that will help you, streamline your processes and operate in a more sustainable manner.
The validity of this certificate can be verified at www.eiqmcert.com



CERTIFICATE

THE MANAGEMENT SYSTEM OF
TOSEE VA TAMIN BANA GOSTAR ASIA SAZEH CO. (KETROWA)

NO.477, BETWEEN 1ST AND 2ND VAHD ST., SHAHID BEHESHTI BLVD., BAGHESTAN HWY., SHAHRAR, TEHRAN PROVINCE, IRAN

has been assessed and certified as meeting the requirements of

ISO 9001:2015

Quality management system

FOR THE FOLLOWING ACTIVITIES

Comprehensive Supplier of Building Materials

CERTIFICATE REGISTRATION NO.: QM5933305
ORIGINAL CERTIFICATION DATE: MAY 07, 2025
CURRENT CERTIFICATION DATE: MAY 07, 2025
CERTIFICATE EXPIRY DATE: MAY 07, 2028
THIS CERTIFICATE REMAINS VALID SUBJECT TO SATISFACTORY SURVEILLANCE AUDITS.


Authorized Signatory
EIQM Ltd. Certification Services
info@eiqmcert.com



EIQM Ltd. Certification Services is a certification body for assessment of objective evidence and issuance of certificate. this certificate is issued on the basis of the independent authority of the EIQM certification services. we partner with you to offer independent services that will help you, streamline your processes and operate in a more sustainable manner.
The validity of this certificate can be verified at www.eiqmcert.com



CERTIFICATE

THE MANAGEMENT SYSTEM OF
TOSEE VA TAMIN BANA GOSTAR ASIA SAZEH CO. (KETROWA)

NO.477, BETWEEN 1ST AND 2ND VAHD ST., SHAHID BEHESHTI BLVD., BAGHESTAN HWY., SHAHRAR, TEHRAN PROVINCE, IRAN

has been assessed and certified as meeting the requirements of

IMS

ISO 9001:2015 , ISO 14001:2015 , ISO 45001:2018

FOR THE FOLLOWING ACTIVITIES

Comprehensive Supplier of Building Materials

CERTIFICATE REGISTRATION NO.: QM5933308
ORIGINAL CERTIFICATION DATE: MAY 07, 2025
CURRENT CERTIFICATION DATE: MAY 07, 2025
CERTIFICATE EXPIRY DATE: MAY 07, 2028
THIS CERTIFICATE REMAINS VALID SUBJECT TO SATISFACTORY SURVEILLANCE AUDITS.


Authorized Signatory
EIQM Ltd. Certification Services
info@eiqmcert.com



EIQM Ltd. Certification Services is a certification body for assessment of objective evidence and issuance of certificate. this certificate is issued on the basis of the independent authority of the EIQM certification services. we partner with you to offer independent services that will help you, streamline your processes and operate in a more sustainable manner.
The validity of this certificate can be verified at www.eiqmcert.com





info@ketrowa.com
www.ketrowa.ir