



WWW.KETROWA.IR



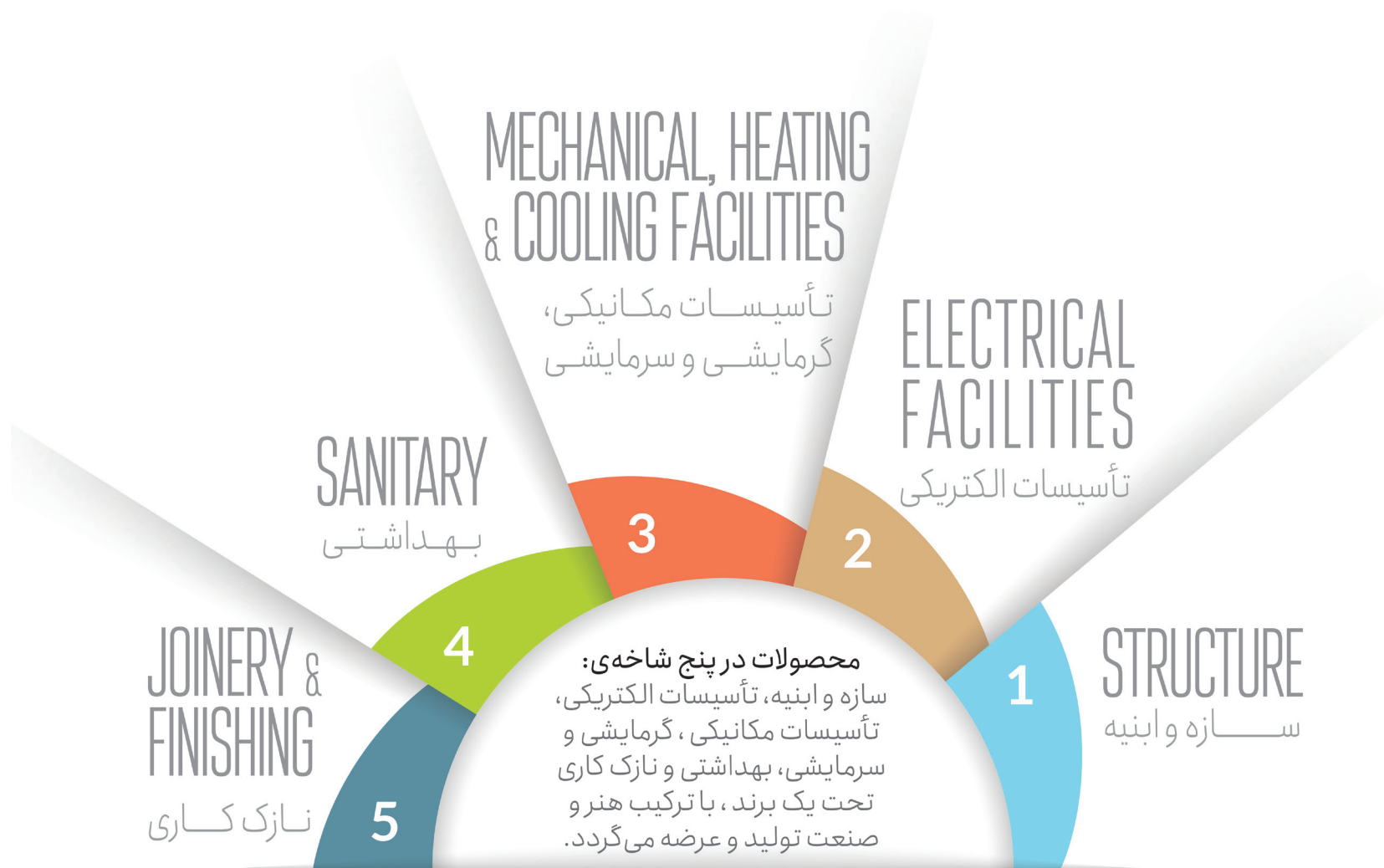
## درباره کتروا

تأمین مصالح و تجهیزات پروژه‌های ساختمانی همواره یکی از مهم‌ترین دغدغه‌های سازندگان و مدیران پروژه‌هاست. اهمیت این مسئله نشأت گرفته از تأثیر مستقیم آن بر زمان بندی پروژه، هزینه تمام شده ساخت و ارزش ساختمان نهایی است.

تیم کتروا با هدف تسهیل فرایند تأمین کالاهای ساختمانی و با در نظر گرفتن مسئولیت اجتماعی خود، سامانه‌ای جامع و برخط را ایجاد نموده است. در این سامانه، سازندگان قادر خواهند بود برای پروژه‌های ساختمانی خود، زمان بندی تأمین مصالح و تجهیزات را آماده نمایند و براساس این برنامه، سفارش تأمین کالا داشته باشند. این سفارش‌ها با مقایسه کالاهای متنوع موجود در سامانه انجام می‌گیرد.

انبوه سازان، مهمترین مشتریان هدف کتروا هستند و کتروا تلاش می‌کند با برنامه ریزی منطقی برای سازندگان و با ارائه مدل خرید نقدی و اعتباری، تأمین و تحویل به موقع کالا را به مصرف کننده ارائه نماید.

تأمین کالاهای ساختمانی برای بازارهای صادراتی، یکی دیگر از اهداف اصلی کتروا است. کتروا قصد دارد بازار سنتی و غیرشفاف را به بازاری مدرن، پرسرعت و دقیق تبدیل نماید که در آن خریداران با مناسب ترین قیمت به کالاهای با کیفیت مدنظر خود دست یابند.

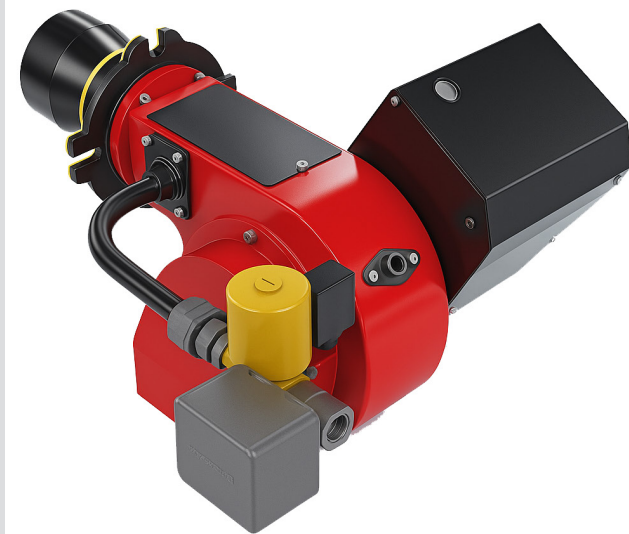


:Products are produced and supplied in five branches  
Structure, Electrical Facilities, Mechanical, Heating & Cooling Facilities,  
.Sanitary, Joinery & Finishing., combining art and industry

Gas Burner

مشعل گاز



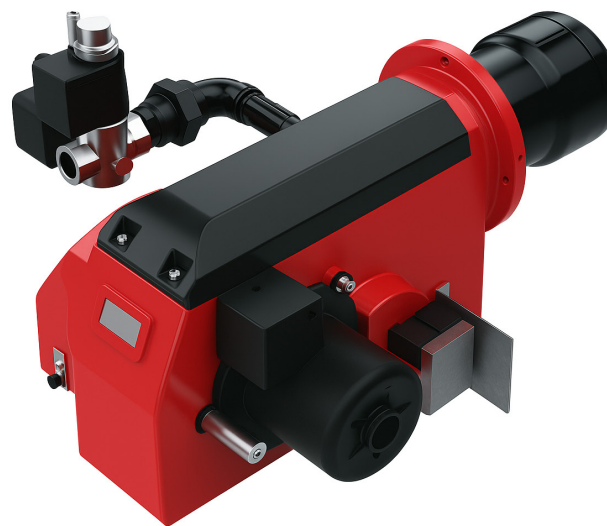
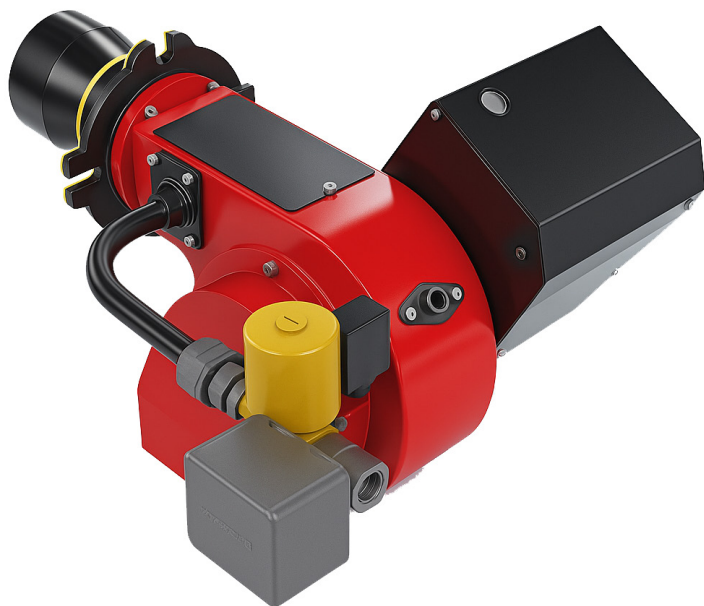


In the past years, cast iron boilers for heating were always offered alone, which required buyers of this product to provide a burner to equip the boiler for the purpose of operating the engine room. The independent supply of two interdependent equipment was sometimes done in an unprofessional manner and caused damage to the boiler, the burner or both, and ultimately the heating needs of the building operators were not met. In order to solve this problem, Ketrowa Company sought to select the standard boiler with a burner and simultaneously supply the two products. In addition to reducing pollutants resulting from combustion, the selection, installation and commissioning of the boiler and the heating burner of heating ensures increased thermal efficiency and reduced energy consumption.

## Ketrowa Gas Burner

مشعل گاز

| Gas Burner                            | Unit | CKI<br>G65   | CKI<br>G85 | CKI<br>G120 | CKI<br>G180 | CKI<br>G260 | CKI<br>G350/C | CKI<br>G350/C2S | CKI<br>G380  | CKI<br>G180 | CKI<br>G500  | CKI<br>G500/2S | CKI<br>G600  | CKI<br>G1000/2S |
|---------------------------------------|------|--------------|------------|-------------|-------------|-------------|---------------|-----------------|--------------|-------------|--------------|----------------|--------------|-----------------|
| Minimum Capacity                      | kw   | 40           | 30         | 47          | 75          | 75          | 120           | 200             | 100          | 200         | 100          | 200            | 150          | 400             |
| Maximum Capacity                      | kw   | 65           | 85         | 124         | 180         | 180         | 350           | 350             | 380          | 380         | 500          | 500            | 600          | 1000            |
| Engine RPM                            | rpm  | 2800         | 2800       | 2800        | 2800        | 2800        | 2800          | 2800            | 2800         | 2800        | 2800         | 2800           | 2800         | 2800            |
| Electric Motor Power                  | W    | 50           | 50         | 100         | 175         | 175         | 450           | 450             | 370          | 370         | 450          | 450            | 750          | 1500            |
| Proportional Pressure                 | mbar | 15-40        | 15-40      | 15-40       | 15-40       | 15-40       | 15-40         | 15-40           | 15-40        | 15-40       | 15-40        | 15-40          | 15-50        | 15-100          |
| How to Function                       |      | Single-stage |            |             |             |             |               | Two-stage       | Single-stage | Two-stage   | Single-stage | Two-stage      | Single-stage | Two-stage       |
| Reducing pollutants from combustion   |      |              |            |             |             |             |               |                 |              |             |              |                |              |                 |
| Ensuring increased thermal efficiency |      |              |            |             |             |             |               |                 |              |             |              |                |              |                 |
| Reducing energy consumption           |      |              |            |             |             |             |               |                 |              |             |              |                |              |                 |







## Ketrowa Gas Burner

| Gas Burner                            | Unit | CKI<br>G65   | CKI<br>G85 | CKI<br>G120 | CKI<br>G180 | CKI<br>G260 | CKI<br>G350/C | CKI<br>G350/C2S | CKI<br>G380  | CKI<br>G380/2S | CKI<br>G500  | CKI<br>G500/2S | CKI<br>G600  | CKI<br>G1000/2S |
|---------------------------------------|------|--------------|------------|-------------|-------------|-------------|---------------|-----------------|--------------|----------------|--------------|----------------|--------------|-----------------|
| Minimum Capacity                      | kw   | 40           | 30         | 47          | 75          | 100         | 120           | 200             | 100          | 200            | 100          | 200            | 150          | 400             |
| Maximum Capacity                      | kw   | 65           | 85         | 124         | 180         | 260         | 350           | 350             | 380          | 380            | 500          | 500            | 600          | 1000            |
| Engine RPM                            | rpm  | 2800         | 2800       | 2800        | 2800        | 2800        | 2800          | 2800            | 2800         | 2800           | 2800         | 2800           | 2800         | 2800            |
| Electric Motor Power                  | W    | 50           | 50         | 100         | 175         | 240         | 450           | 450             | 370          | 370            | 450          | 450            | 750          | 1500            |
| Proportional Pressure                 | mbar | 15-40        | 15-40      | 15-40       | 15-40       | 15-40       | 15-40         | 15-40           | 15-40        | 15-40          | 15-40        | 15-40          | 15-50        | 15-100          |
| How to Function                       |      | Single-stage |            |             |             |             |               | Two-stage       | Single-stage | Two-stage      | Single-stage | Two-stage      | Single-stage | Two-stage       |
| Reducing pollutants from combustion   |      |              |            |             |             |             |               |                 |              |                |              |                |              |                 |
| Ensuring increased thermal efficiency |      |              |            |             |             |             |               |                 |              |                |              |                |              |                 |
| Reducing energy consumption           |      |              |            |             |             |             |               |                 |              |                |              |                |              |                 |





**DEIQM**  
CERTIFICATION SERVICES

# CERTIFICATE

THE MANAGEMENT SYSTEM OF  
**TOSEE VA TAMIN BANA GOSTAR ASIA SAZEH CO. (KETROWA)**

NO.477, BETWEEN 1ST AND 2ND VAHID ST., SHAHID BEHESHTI BLVD., BAGHESTAN HWY., SHAHRGAR, TEHRAN PROVINCE, IRAN

has been assessed and certified as meeting the requirements of

**ISO 14001:2015**

Environmental management system

FOR THE FOLLOWING ACTIVITIES

Comprehensive Supplier of Building Materials

CERTIFICATE REGISTRATION NO.: QM5933306  
ORIGINAL CERTIFICATION DATE: MAY 07, 2025  
CURRENT CERTIFICATION DATE: MAY 07, 2025  
CERTIFICATE EXPIRY DATE: MAY 07, 2028

THIS CERTIFICATE REMAINS VALID SUBJECT TO SATISFACTORY SURVEILLANCE AUDITS.

*imark*  
Authorized Signatory  
EIQM Ltd. Certification Services  
info@eiqmcert.com



EIQM Ltd. Certification Services is a certification body for assessment of objective evidence and issuance of certificate. this certificate is issued on the basis of the independent authority of the EIQM certification services. we partner with you to offer independent services that will help you, streamline your processes and operate in a more sustainable manner.  
The validity of this certificate can be verified at [www.eiqmcert.com](http://www.eiqmcert.com)



**DEIQM**  
CERTIFICATION SERVICES

# CERTIFICATE

THE MANAGEMENT SYSTEM OF  
**TOSEE VA TAMIN BANA GOSTAR ASIA SAZEH CO. (KETROWA)**

NO.477, BETWEEN 1ST AND 2ND VAHID ST., SHAHID BEHESHTI BLVD., BAGHESTAN HWY., SHAHRGAR, TEHRAN PROVINCE, IRAN

has been assessed and certified as meeting the requirements of

**ISO 45001:2018**

Occupational health and safety management system

FOR THE FOLLOWING ACTIVITIES

Comprehensive Supplier of Building Materials

CERTIFICATE REGISTRATION NO.: QM5933307  
ORIGINAL CERTIFICATION DATE: MAY 07, 2025  
CURRENT CERTIFICATION DATE: MAY 07, 2025  
CERTIFICATE EXPIRY DATE: MAY 07, 2028

THIS CERTIFICATE REMAINS VALID SUBJECT TO SATISFACTORY SURVEILLANCE AUDITS.

*imark*  
Authorized Signatory  
EIQM Ltd. Certification Services  
info@eiqmcert.com



EIQM Ltd. Certification Services is a certification body for assessment of objective evidence and issuance of certificate. this certificate is issued on the basis of the independent authority of the EIQM certification services. we partner with you to offer independent services that will help you, streamline your processes and operate in a more sustainable manner.  
The validity of this certificate can be verified at [www.eiqmcert.com](http://www.eiqmcert.com)



**DEIQM**  
CERTIFICATION SERVICES

# CERTIFICATE

THE MANAGEMENT SYSTEM OF  
**TOSEE VA TAMIN BANA GOSTAR ASIA SAZEH CO. (KETROWA)**

NO.477, BETWEEN 1ST AND 2ND VAHID ST., SHAHID BEHESHTI BLVD., BAGHESTAN HWY., SHAHRGAR, TEHRAN PROVINCE, IRAN

has been assessed and certified as meeting the requirements of

**ISO 9001:2015**

Quality management system

FOR THE FOLLOWING ACTIVITIES

Comprehensive Supplier of Building Materials

CERTIFICATE REGISTRATION NO.: QM5933305  
ORIGINAL CERTIFICATION DATE: MAY 07, 2025  
CURRENT CERTIFICATION DATE: MAY 07, 2025  
CERTIFICATE EXPIRY DATE: MAY 07, 2028

THIS CERTIFICATE REMAINS VALID SUBJECT TO SATISFACTORY SURVEILLANCE AUDITS.

*imark*  
Authorized Signatory  
EIQM Ltd. Certification Services  
info@eiqmcert.com



EIQM Ltd. Certification Services is a certification body for assessment of objective evidence and issuance of certificate. this certificate is issued on the basis of the independent authority of the EIQM certification services. we partner with you to offer independent services that will help you, streamline your processes and operate in a more sustainable manner.  
The validity of this certificate can be verified at [www.eiqmcert.com](http://www.eiqmcert.com)



**DEIQM**  
CERTIFICATION SERVICES

# CERTIFICATE

THE MANAGEMENT SYSTEM OF  
**TOSEE VA TAMIN BANA GOSTAR ASIA SAZEH CO. (KETROWA)**

NO.477, BETWEEN 1ST AND 2ND VAHID ST., SHAHID BEHESHTI BLVD., BAGHESTAN HWY., SHAHRGAR, TEHRAN PROVINCE, IRAN

has been assessed and certified as meeting the requirements of

**IMS**

ISO 9001:2015 , ISO 14001:2015 , ISO 45001:2018

FOR THE FOLLOWING ACTIVITIES

Comprehensive Supplier of Building Materials

CERTIFICATE REGISTRATION NO.: QM5933308  
ORIGINAL CERTIFICATION DATE: MAY 07, 2025  
CURRENT CERTIFICATION DATE: MAY 07, 2025  
CERTIFICATE EXPIRY DATE: MAY 07, 2028

THIS CERTIFICATE REMAINS VALID SUBJECT TO SATISFACTORY SURVEILLANCE AUDITS.

*imark*  
Authorized Signatory  
EIQM Ltd. Certification Services  
info@eiqmcert.com



EIQM Ltd. Certification Services is a certification body for assessment of objective evidence and issuance of certificate. this certificate is issued on the basis of the independent authority of the EIQM certification services. we partner with you to offer independent services that will help you, streamline your processes and operate in a more sustainable manner.  
The validity of this certificate can be verified at [www.eiqmcert.com](http://www.eiqmcert.com)





[info@ketrowa.com](mailto:info@ketrowa.com)

[www.ketrowa.ir](http://www.ketrowa.ir)